

# HAWORTH

## SMART LOCKERS INSPIRATION LAYOUTS

---

Haworth Application Design Team - 2023



# INDEX

## DESIGN FEATURES

- Full Height ..... SIF's -
- Partial Height ..... SIF's -
- Display Cabinet ..... SIF's -
- Bench Seating ..... SIF's -
- Open Cubbies ..... SIF's -
- Markerboard Fronts ..... SIF's -
- Double Sided ..... SIF's -

## MATERIAL

- Veneer ..... SIF's -
- Laminate ..... SIF's -
- Both ..... SIF's -

## HAWORTH SHOWROOM

- Chicago ..... SIF's -
- Haworth HQ ..... SIF's -

Architectural interiors product shown is used for rendering purposes only.  
Validate before order entry.

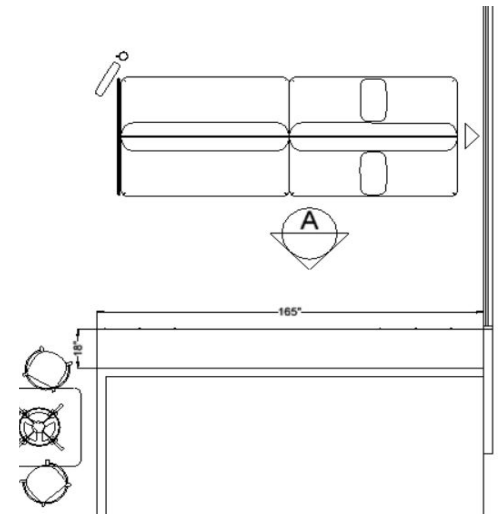


## LOCKERS | Designated Locker Area

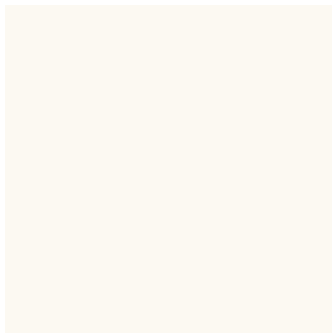


### Key Design Features

- Full height open lockers have two back coat hooks
- To achieve the mixed front look, a quantity of two locker towers will be ordered in each of the three door colors and the doors will need to be swapped in the field



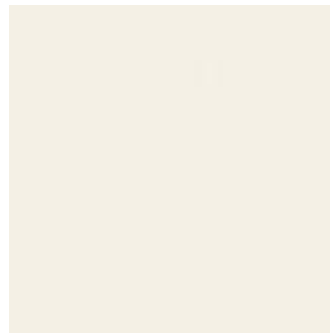
Top & Ends- Laminate- Landmark



Case & Doors Laminate- Linen



Doors- Putty



Doors- Chalk

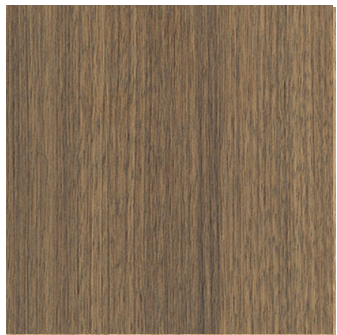


## LOCKERS | Learning Center

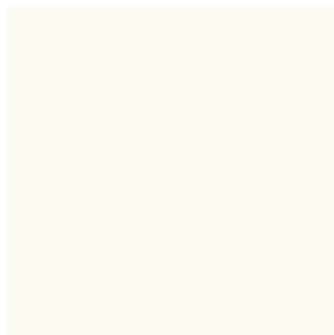


### Key Design Features

- Created with two 12" deep locker banks placed corner to corner
- Tops and end panels were used in the alcove to conceal all visible wireways
- Extended door front provides clean detail at the floor
- Coat hooks need to be separately specified and installed in the field using field supplied hardware



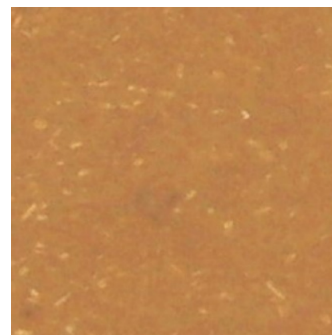
Top & Ends- Laminate- Neo Walnut



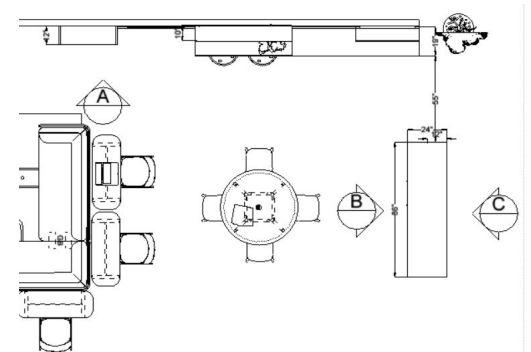
Case & Doors Laminate- Linen



Metal Trim- Sable



Emeco Stools- Natural



## LOCKERS | Collaborative Workspace

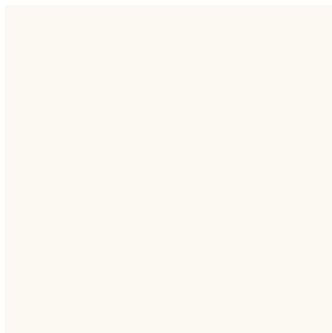


### Key Design Features

- Base includes a toe kick to ensure no interference with seat cushions
- Lockers are required to sit on a field supplied platform by others. Measurements for platform to be determined on site
- Fronts are markeboard. Numbers are handwritten and are not included in part number



Casegoods- Veneer- Clear on Rift cut White Oak



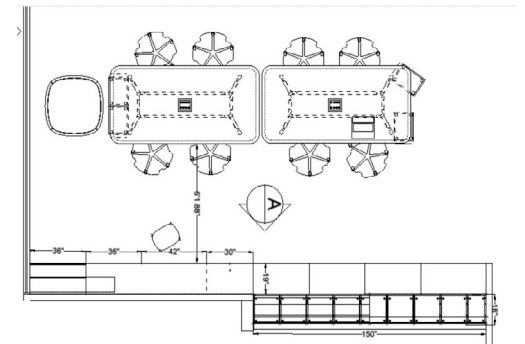
Locker Case- Laminate- Linen



Storage- Laminate- Charcoal



Cushion- Dots, Basil





## LOCKERS | Integrated Bench

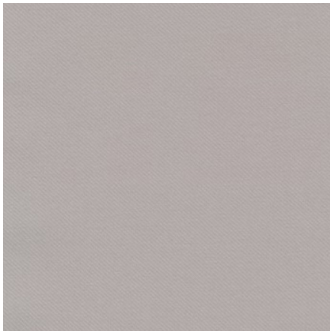


### Key Design Features

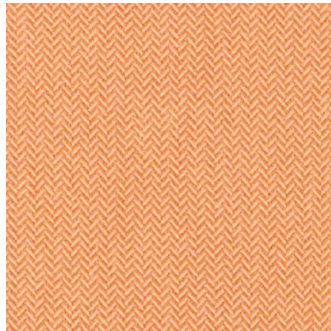
- Integrated bench seating in locker bank
- Open cubbies below seats to store personal items while using bench
- Locked door lockers on either side of bench seating



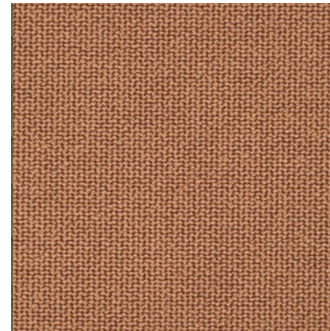
Lockers- Laminate- Maple



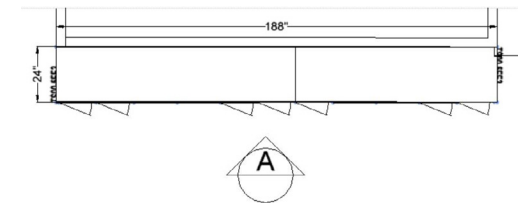
Cushion- Kvadrat, Reflect, 104



Pillows- Hobson, These go to 11



Pillows- Novelty, Zany



## LOCKERS | Lobby/Lounge



### Key Design Features

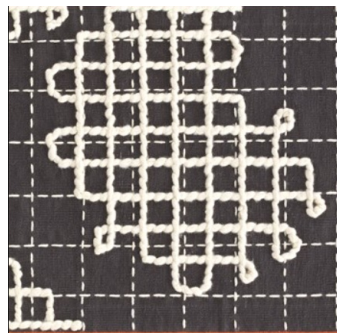
- Wood Display cabinet to provide accent to layout
- Stretch and pull sizing easily accommodates tailored fit between two hard walls which conceals wireways and removes requirement for end panels



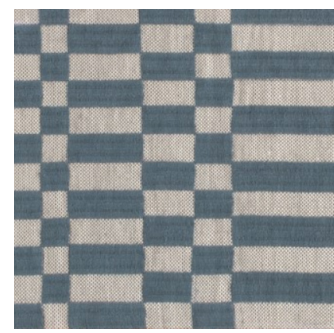
Lockers- Laminate- Platinum



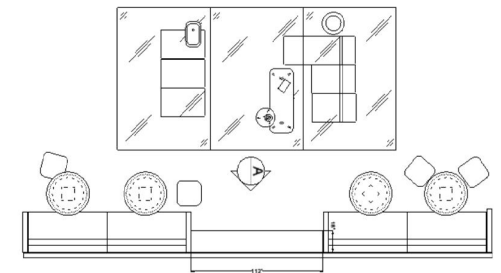
Top & Display- Veneer- Pebble



GAN- Bandas- Pattern A- Dark Grey



GAN- Bandas- Petrol





## LOCKERS | Cafe

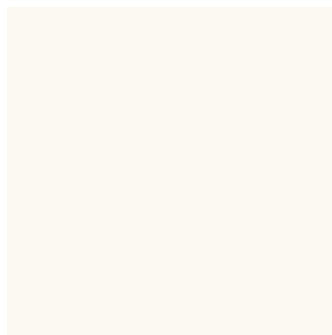


### Key Design Features

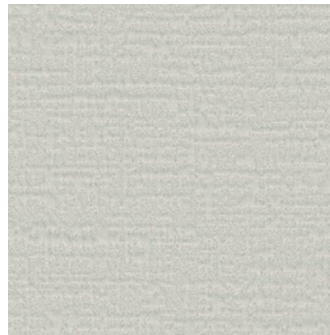
- Open top display cabinet above lockers allows for alignment with adjacent Haworth Collection shelving unit
- Locker doors extend to the floor for a clean transition at the floor



Full Height Lockers- Veneer- Ebony



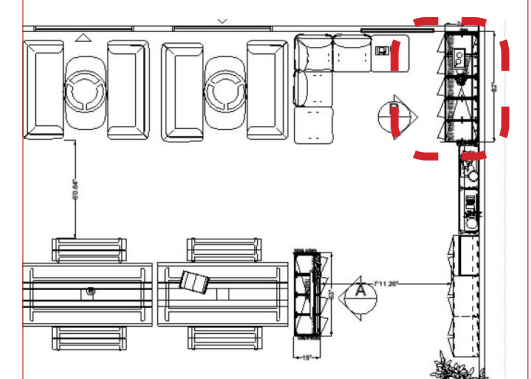
Partial Height Lockers- Laminate Linen



Cabana Screens- Scapes- Moon



Cabana- Seating- Scapes, Beach



SIF Tag: Lockers 6a

For questions, email [HADT@haworth.com](mailto:HADT@haworth.com).

HAWORTH



## LOCKERS | Cafe

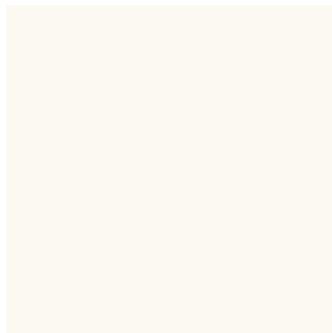


### Key Design Features

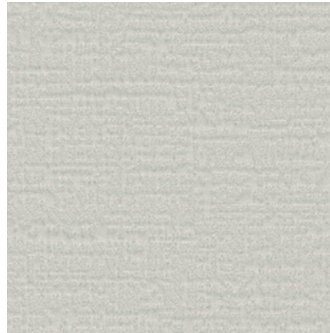
- Display cabinet above supports installation of monitor on one side and open storage on the other
- Monitor wire management to be determined on site
- Separately specified wall mounted markerboard in display cabinet for company announcements



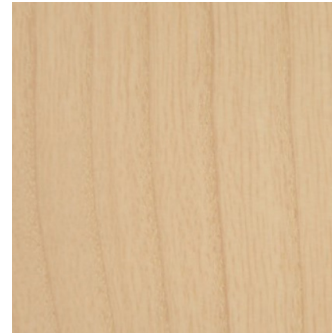
Locker Display Cabinet- Veneer- Ebony



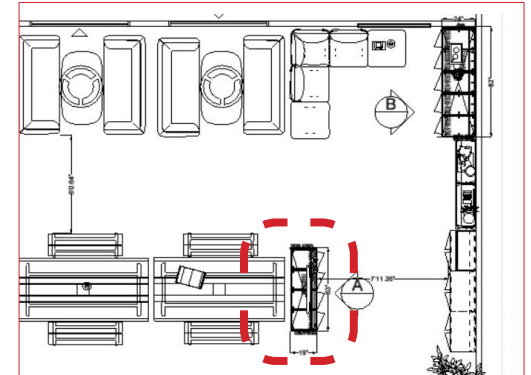
Lockers- Laminate Linen



Cabana Screens- Scapes- Moon



Buzzi Picnic- Ash Whitewash

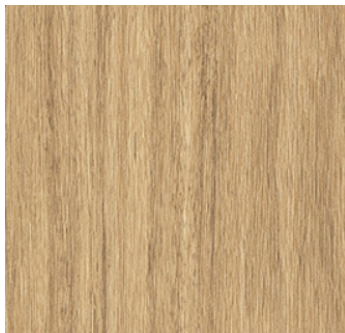


## LOCKERS | NeoCon

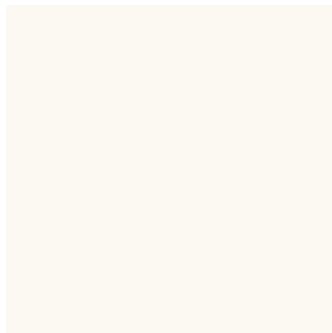


### Key Design Features

- Display cabinet with monitor
- Variety of locked and open storage cubbies to meet all user needs
- Bank of shared lockers with contrasting door fronts



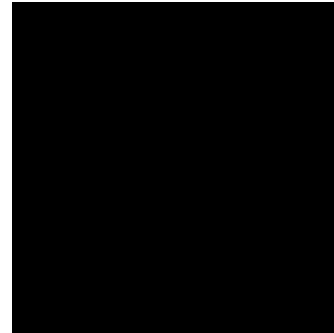
Lockers- Case- Laminate- Landmark



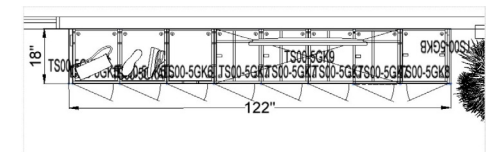
Lockers- Doors- Laminate Linen



Seating- Downtown- Iroko



Seating Trim- Black



SIF Tag: Lockers 7

For questions, email [HADT@haworth.com](mailto:HADT@haworth.com).

HAWORTH



## LOCKERS | Individual Workspace

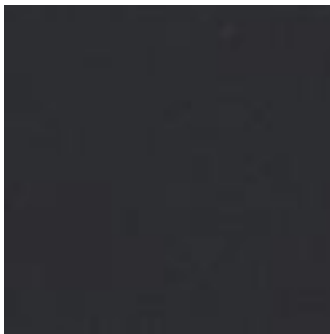


### Key Design Features

- Height of upper cubbies aligns with adjacent 2H fixed surfaces
- Active usage for both sides of open display cabinet
- Contrasting finish on door fronts



Lockers Case- Laminate- Brazilwood



Lockers Doors- Laminate Charcoal



Worksurface- Ply Edge



Seating- Floyd by Kvadrat 213

