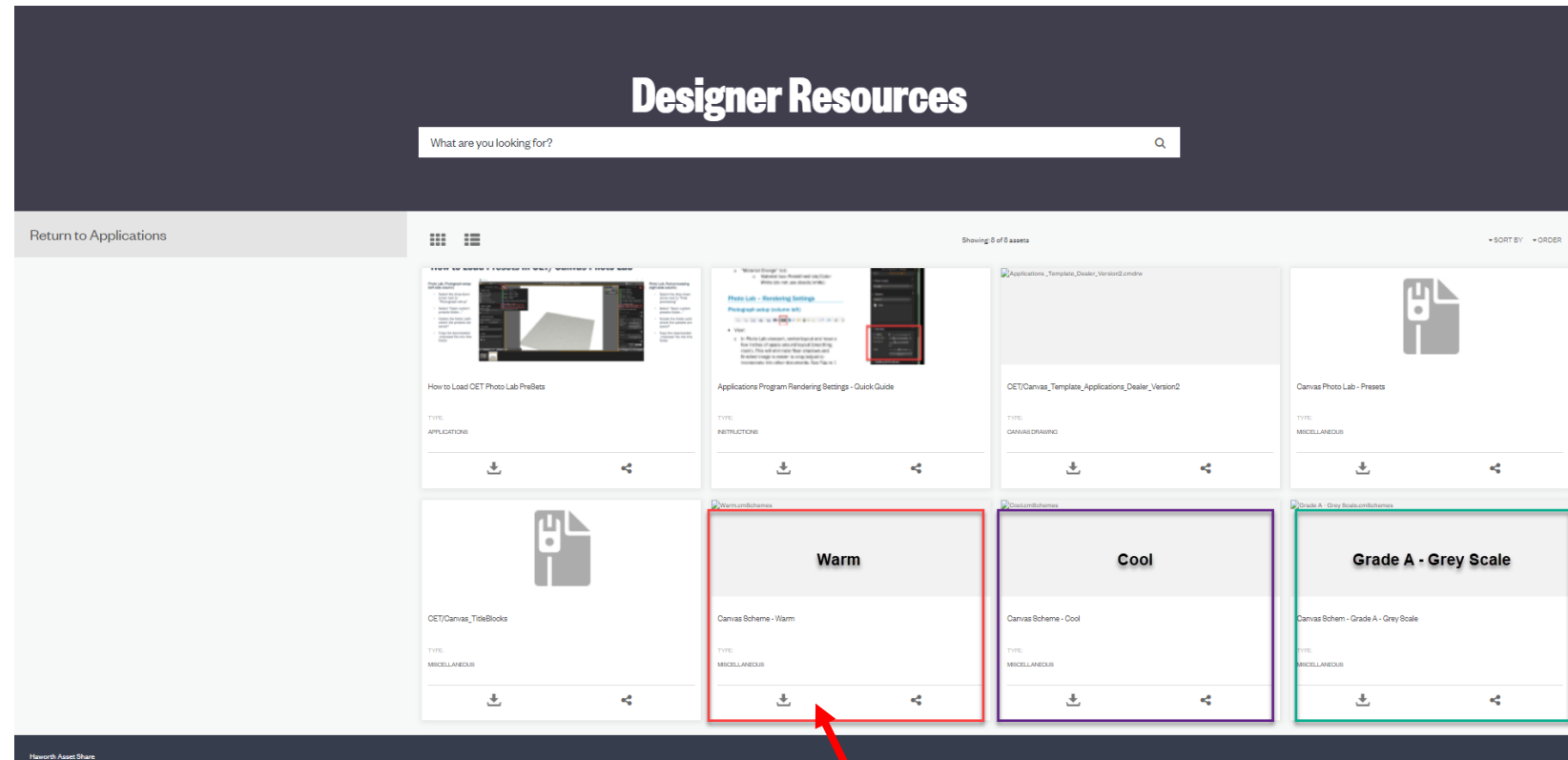


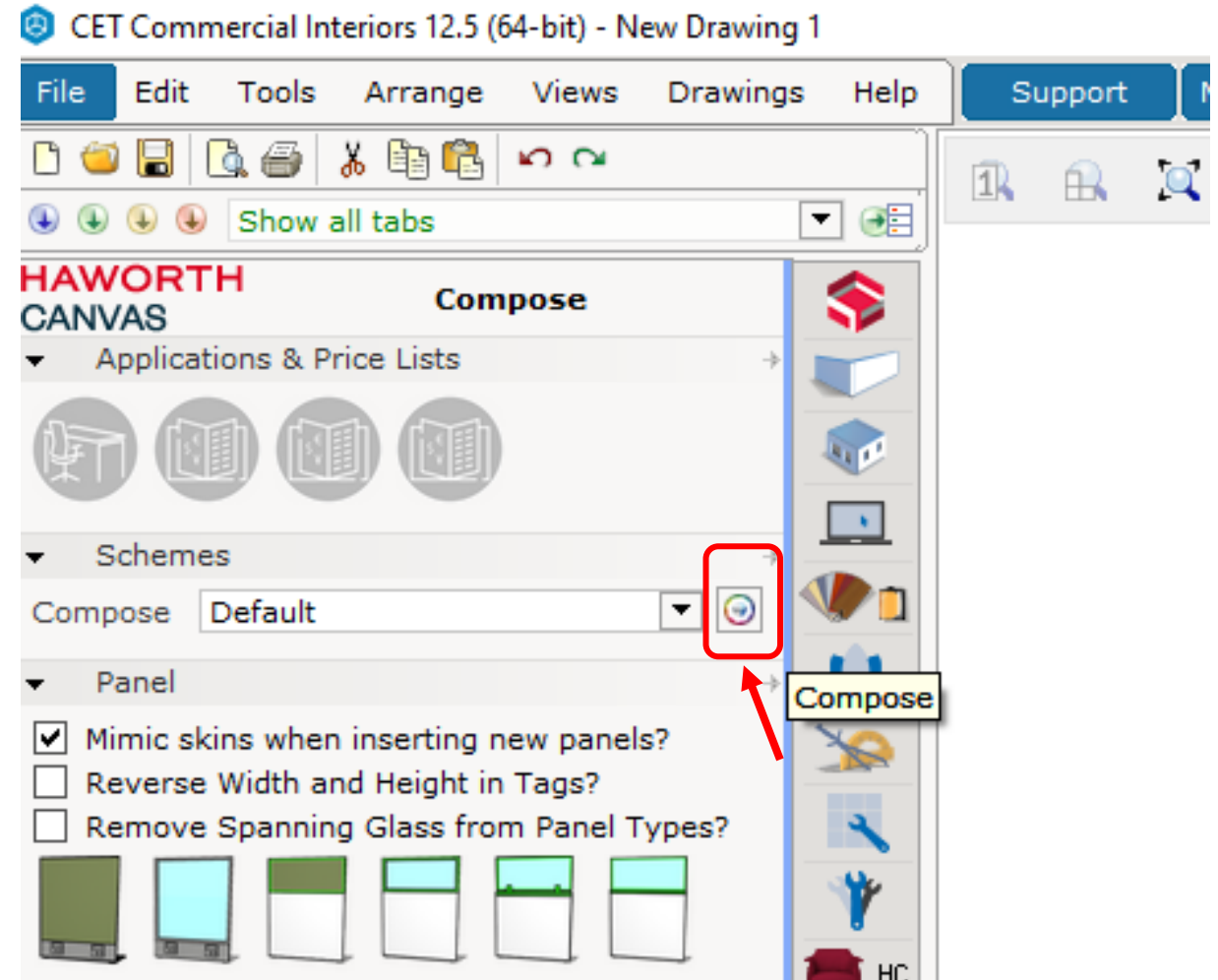
# How to Load Canvas Schemes from Designer Resources

1. Download Scheme, example: “Scheme – Warm”
2. Save to where your other schemes are saved.  
\*Recommend location:  
PC/Documents/CET  
Documents/Schemes



# How to Load Canvas Schemes from Designer Resources

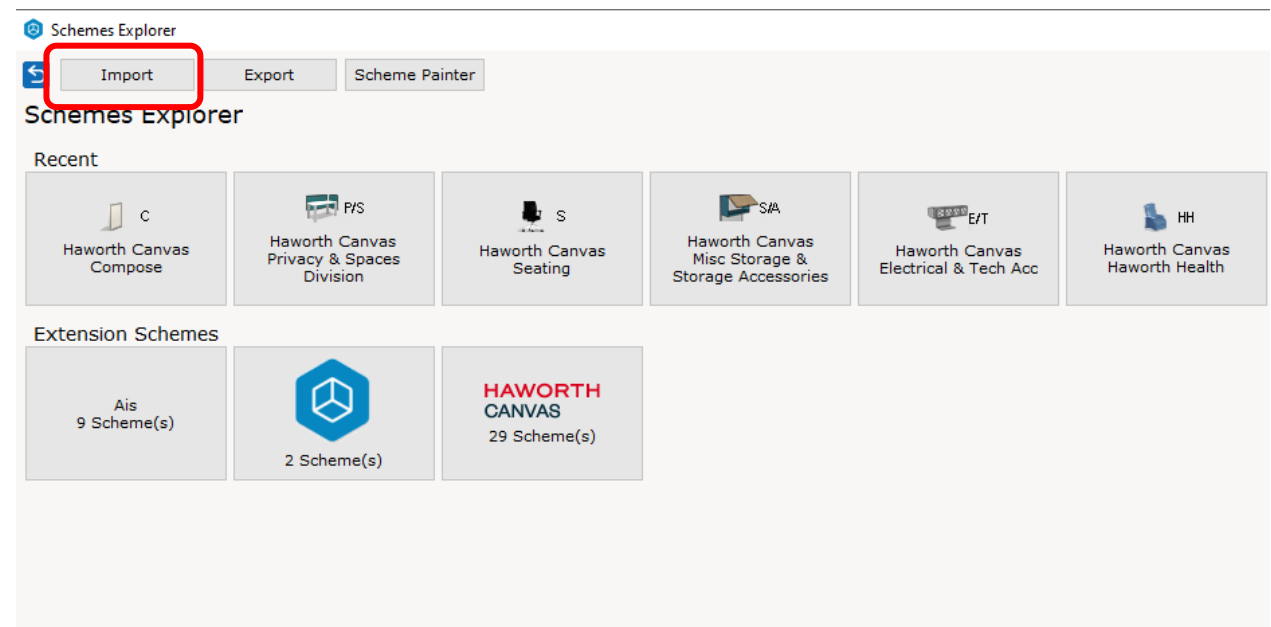
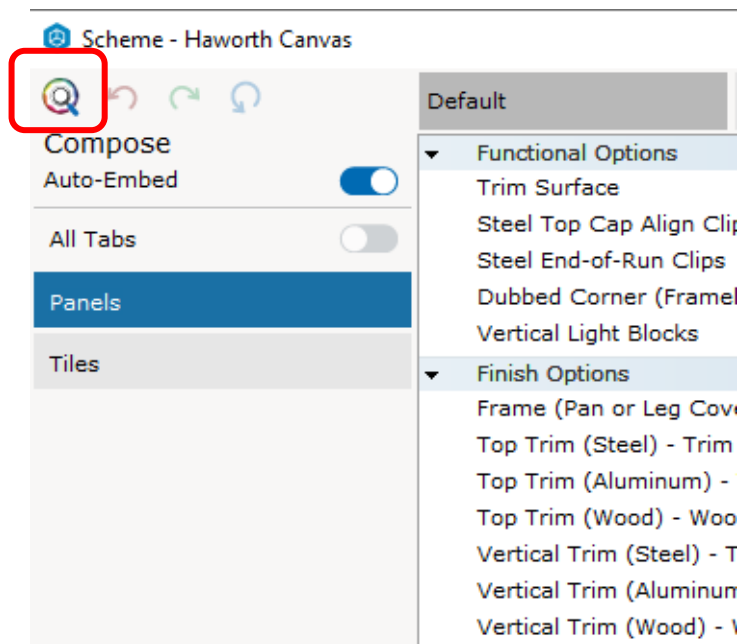
1. In Canvas, open Scheme Manager in a Component Section



# How to Load Canvas Schemes from Designer Resources

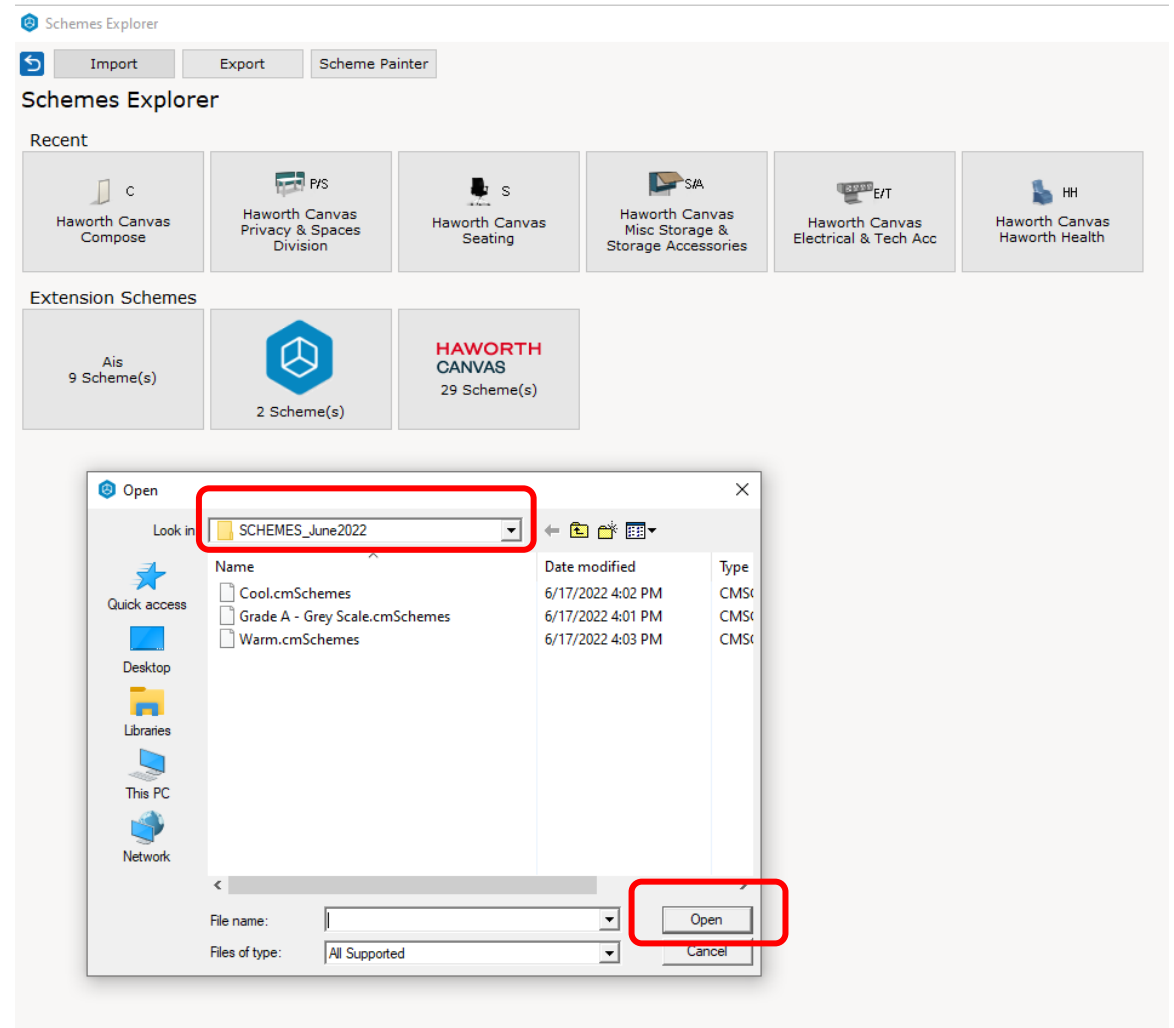
1. Select the Magnifying Glass icon in corner. Will open new window.

2. Select “Import”. Will open new window.



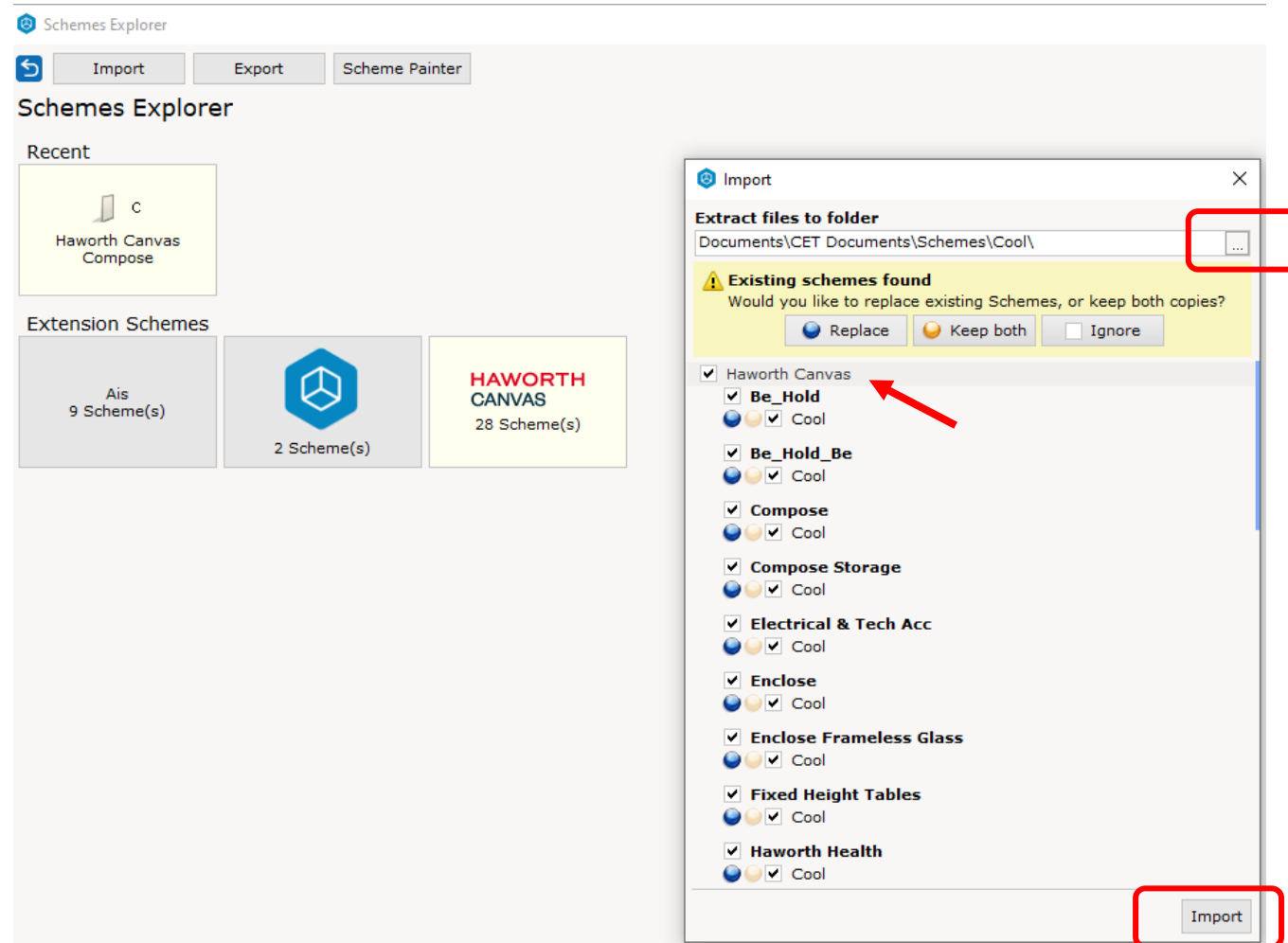
# How to Load Canvas Schemes from Designer Resources

3. Find your saved new downloaded scheme in drop down file explorer
4. Select the scheme file
5. Select “Open”
6. New “Import” window will open



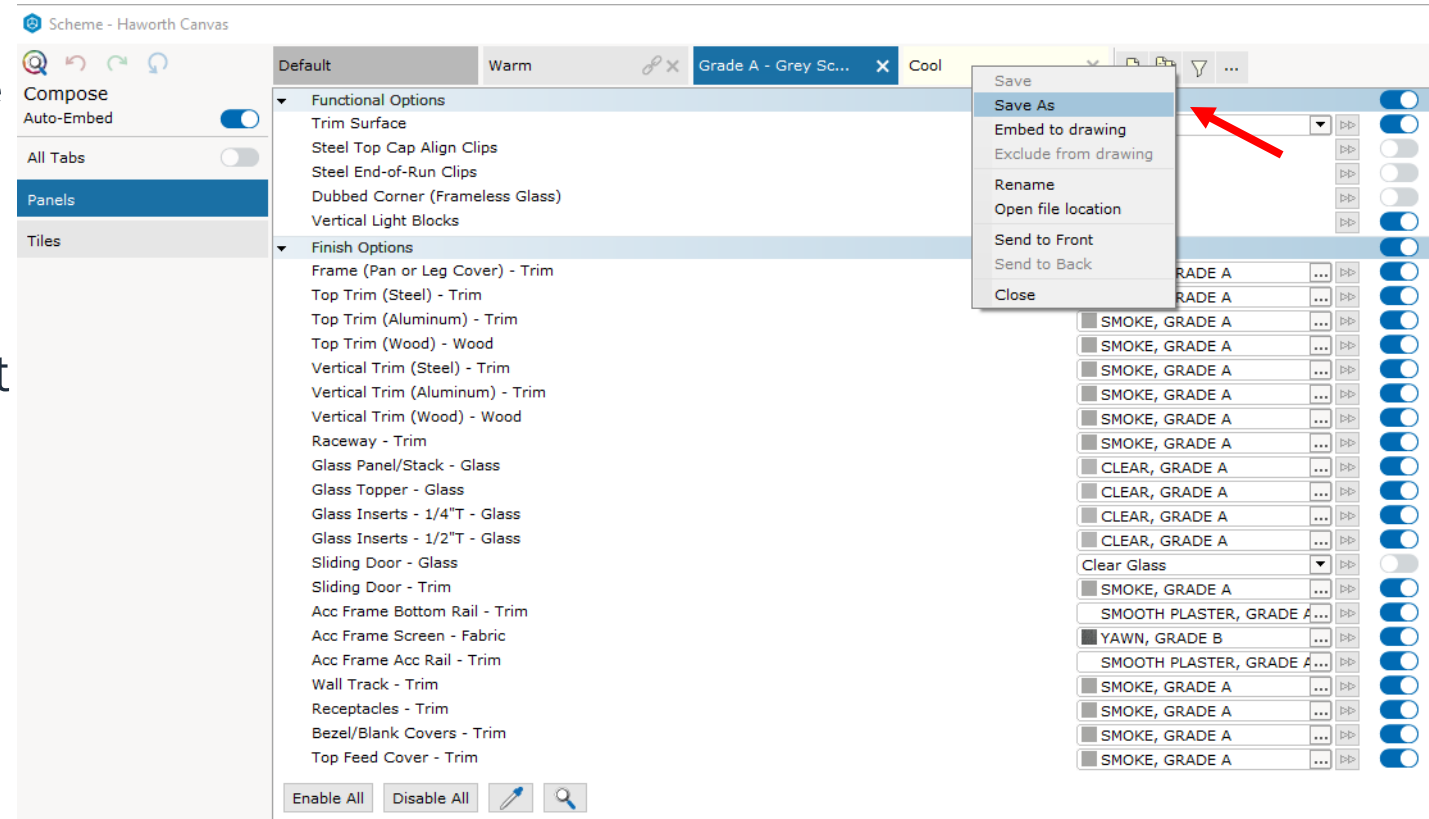
# How to Load Canvas Schemes from Designer Resources

6. Select each button you want the scheme for each Component Section
7. Or select all by checking the Haworth Canvas button
8. Make sure the scheme will be extracted to where you want it to be saved in the top drop down
9. Select “Import”



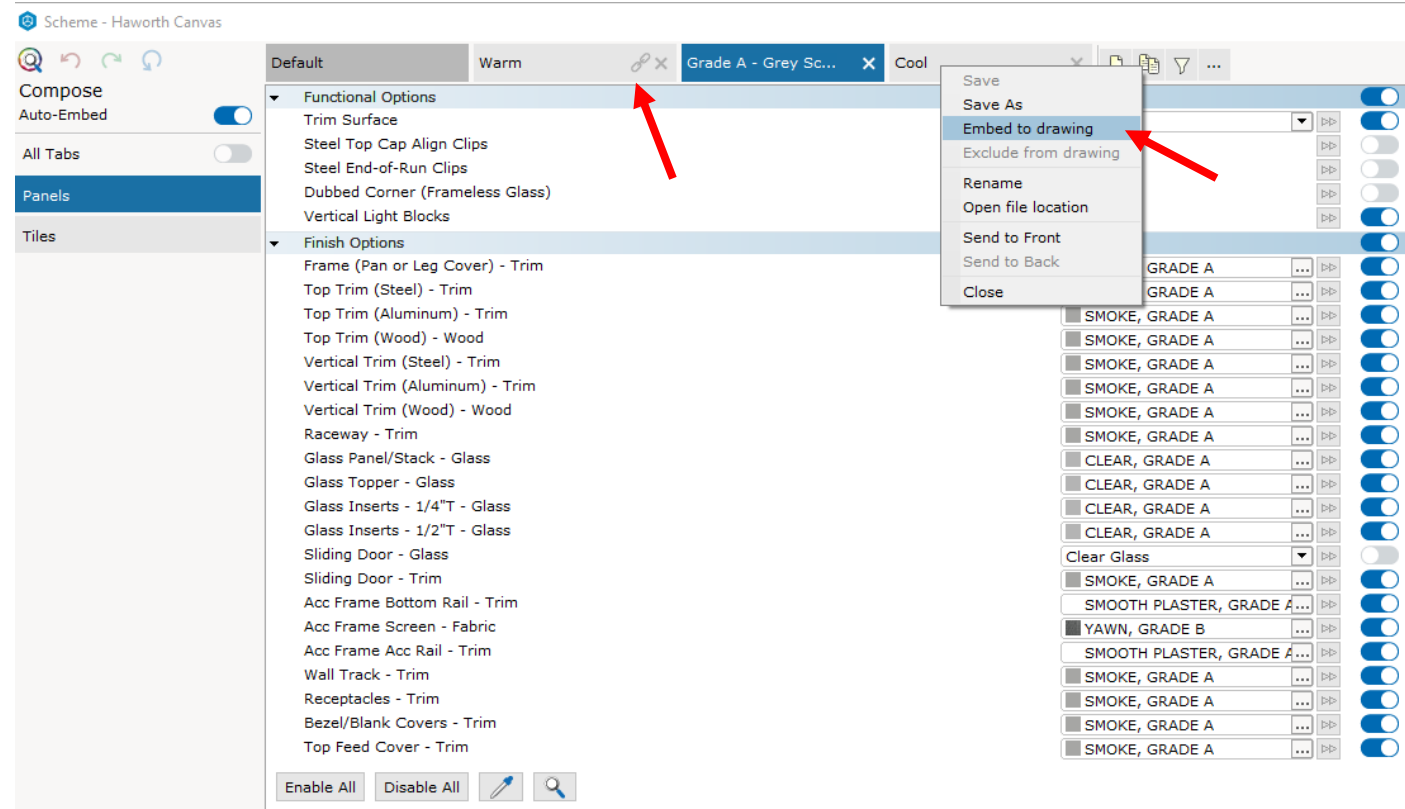
# How to Load Canvas Schemes from Designer Resources


- To save the scheme to access later, make sure it is saved within the Scheme Manager to your computer....
- Open Scheme Manager in Component Section
- Right click on the scheme tab and select “Save As” and save to where you save schemes
- Do this for each scheme and in each Component Section
- \*Recommend this step or you will have to import scheme again**




# How to Load Canvas Schemes from Designer Resources

11. To save the scheme to the drawing, you will need to “embed” the scheme....
12. On the scheme tab, click the chain link to the locked position or right click on tab and select “Embed to Drawing”
13. Save drawing file



Warm  = Embedded

Warm  = Not Embedded

# Alternate Option



# How to Load Canvas Schemes from Designer Resources

## Alternate Option

1. After opening a Scheme Manager in Component Section
2. Select the tab with three horizontal dots
3. Select Open...
4. At the Look in: drop down, find location where you saved the scheme
5. Select Open
6. Save to computer and/or drawing as seen in previous pages 6 and 7
7. Save drawing file

